

STX

Standard Model
Stage Top Incubator

23 years of our technical know-how is here.

Happiness for Cells, Success for Researchers

To support successful cell culturing with new features, "STX" is our answer to the optimized incubating environment.

All for Living Cells
 for your imaging



Stage Top Incubator

Stage Top Incubator

A fail-proof Incubation

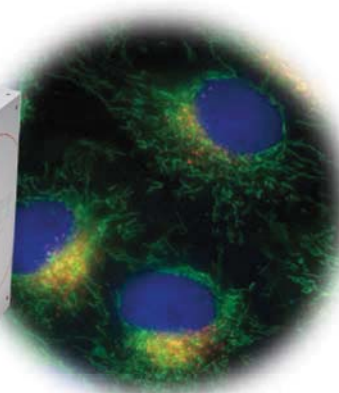
Provides an easy, cleaver and accurate cellular environment.

Stress-Free Quality

Intuitive operation and varieties of new functions are included to support cell culturing without stress.

Simple Selections

Easy add-on and expand the application. Now available with common Accessories as standard



Courtesy of Dr. Takeharu Nagai
 The Institute of Scientific and Industrial Research, Osaka University

Accessories (included in the system)

Enable to support Well Plate, 35mm, 50/60mm dish, chamber slide, slide glass and chambered coverglass.

Dish Attachment



model
 ATX-A
 ATX-W (Well Plate)
 ATX-D (35, 50/60mm dish)
 ATX-CSG
 (chamber slide, slide glass and chambered coverglass)

Magnetic Fixing Lid



model
 LX-W (Well Plate)
 LX-D35 (35mm dish)
 LX-D56 (50/60mm dish)
 LX-CSG
 (chamber slide, slide glass and chambered coverglass)

Controller



Model:
STXG
 Temp. Controller with built-in digital gas mixer for 100%CO₂ gas use.



Model:
STXF
 Temp. Controller with a gas flowmeter for premixed gas use.

Support Well Plate for general XY motorized stage



Temp. Controller with built-in digital gas mixer.
 Temp. Controller with a gas flowmeter for premixed gas.

Model:
STXG-WSKMX-SET
 Model:
STXF-WSKMX-SET

Support Well Plate for piezo stage WSB 500



Temp. Controller with built-in digital gas mixer.
 Temp. Controller with a gas flowmeter for premixed gas.

Model:
STXG-WSBX-SET
 Model:
STXF-WSBX-SET

* Above "SET" model is including Chamber Unit, Controller, magnetic Dish Attachment and magnetic dish Fixing Lid.

Digital Gas Mixer (optional)

For Low Oxygen Control (hypoxia)
 100%CO₂ & 100%N₂ gas cylinder use



Model:
STX-CO202
 CO₂: 5.0-20.0%
 O₂: 0.1-18.0%
 * for STXG and STXF controller

For CO₂ concentration adjustment
 100%CO₂ gas cylinder use.



Model:
STX-CO2
 CO₂: 5.0-20.0%
 * only for STXF controller

For O₂ concentration adjustment
 100%N₂ gas cylinder use



Model:
STX-O2
 O₂: 0.1-18.0%
 Must be used with STX-CO₂. It can not be used alone